

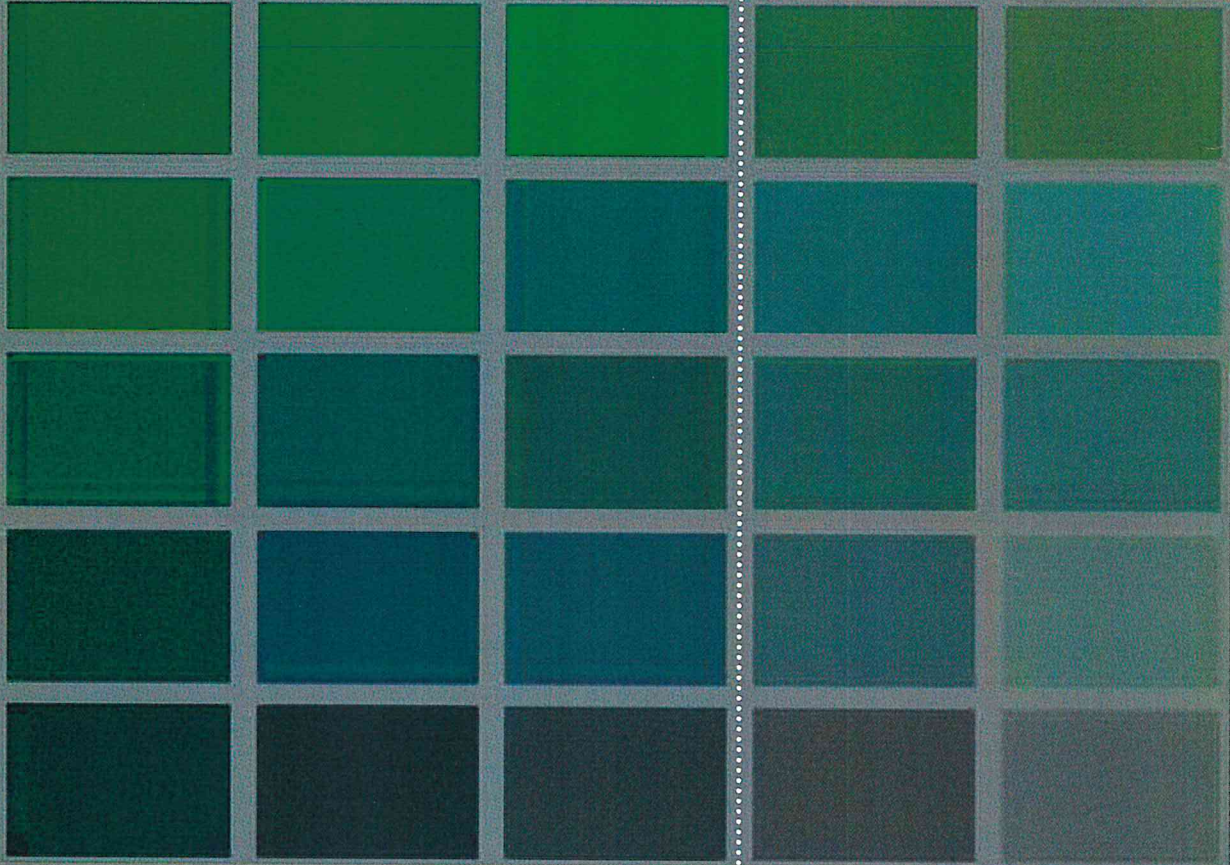
Recommended Colors

This chart includes a recommended palette of colors. It does not include every dark earth tone color present in the Scenic Area. The chart represents a sample of colors and a range of shades. You may be able to use colors that don't have an exact match on the recommended chart. Colors found in the Scenic Area vary from site to site depending on variables such as the direction the site faces and the type of vegetation present. Look to the proposed development site for color possibilities.

The Special Management Area allows structures on sites not visible from Key Viewing Areas to be earth tones found at the specific building site or surrounding landscape. This chart includes some earth tone colors that are not dark, which may be found in the landscape and may be acceptable for these Special Management Area sites.

BLUES GREENS

1 2 3 4 5



A

Dark Earth Tone Colors

You should choose a color that is present in the landscape at or near your building site. These are dark earth tone colors found in many areas of the Scenic Area.

B

**NOT ALL COLORS ON THIS CHART
MAY BE APPROVED AT ALL SITES.
PLEASE CONSULT YOUR REVIEW
AGENCY.**

C

D

Earth Tone Colors

These colors are earth tones. They are not dark colors and are not recommended for sites visible from Key Viewing Areas.

E

REDS

BROWNS

GOLDS

6 7 8 9 10 11 12 13 14 15 16

Dark Earth Tones

Earth Tones

